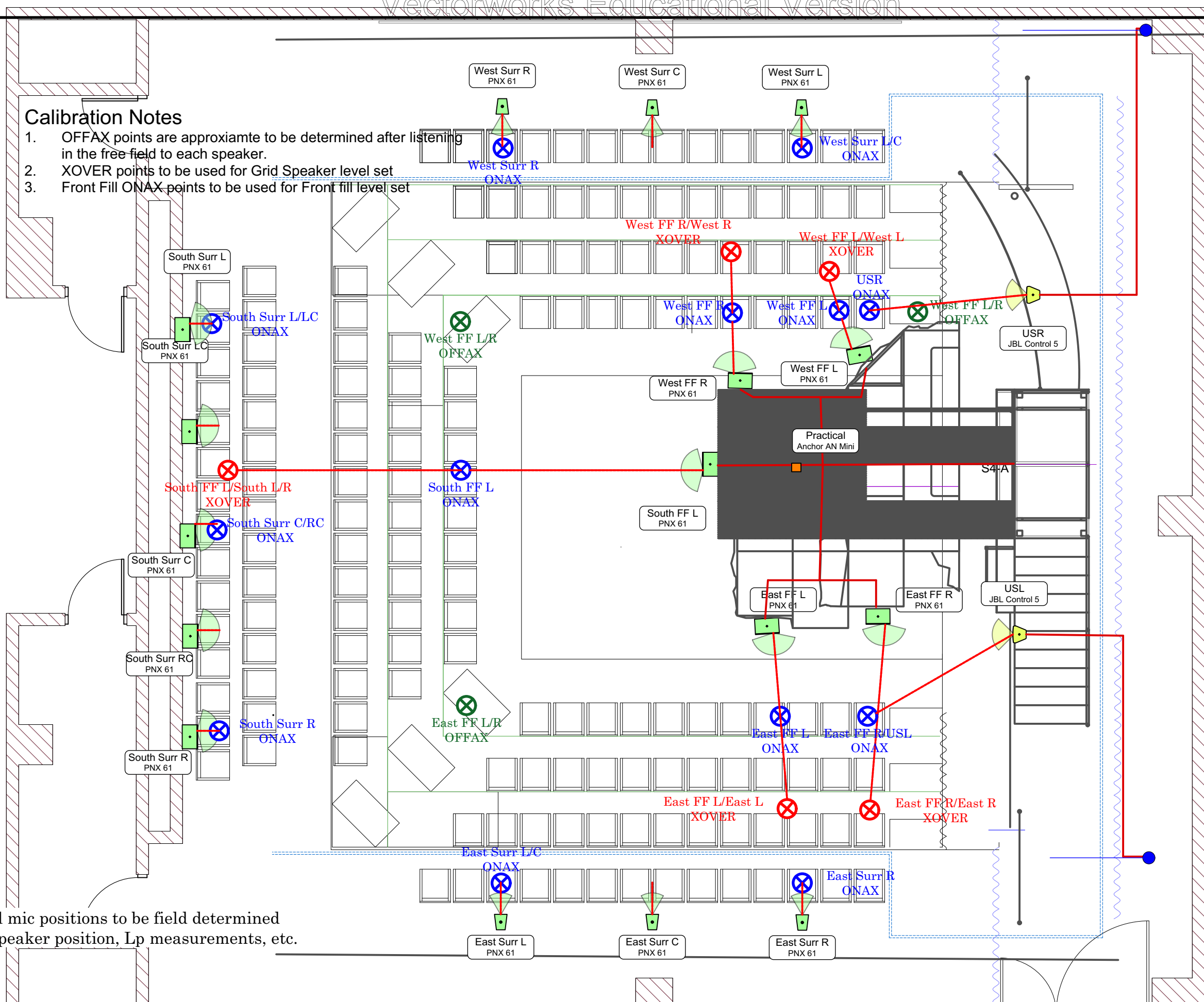


Calibration Notes

1. OFFAX points are approximate to be determined after listening in the free field to each speaker.
2. XOVER points to be used for Grid Speaker level set
3. Front Fill ONAX points to be used for Front fill level set



Note: all actual mic positions to be field determined based on loudspeaker position, Lp measurements, etc.

Delaney Shay Sound Design

Assistant Adam Lewis
(773)558-2471
lewis410@purdue.edu

Sound Engineer Adam Lewis
(773)558-2471
lewis410@purdue.edu

- = Floor Level Patch Point
- = Below Platform Patch Point
- = XLR Cables
- = PNX 121/ Sub
Dispersion: 90° H x 40° V
- = JBL Control 5
- = Practical Anchor Mini
- = PNX 121/9T
Dispersion: 90° H x 40° V
- = PNX61
Dispersion: 150° H x 60° V

In The Blood

By Suzan-Lori Parks

Director Tasia Jones
Scenic Designer Kate Cardinali
Lighting Designer Baxter Chambers
Costume Designer Allison Jones
Drawn By DRS

DISCLAIMER: The designer is responsible for the aural aspects of the production only, and all specifications provided relate solely to the appearance of the sound system and not to matters of electrical or structural soundness and/or safety. The implementation of this design must comply with the most stringent applicable federal and local safety and fire certificates. The designer is not qualified to determine the electrical or structural appropriateness of the design and will not assume responsibility for damages resulting through improper engineering and/or implementation in the handling of the elements of the sound design. The designer agrees to make prompt alterations to any specification found to be incompatible with proper safety precautions.

Plan - Deck Level

SDP

Scale 1/8" = 1'-0"

Revision Delaney Shay— 4/27/2020

Plate # **01** of 3

Assistant Adam Lewis
(773)558-2471
lewis410@purdue.edu

Sound Engineer Adam Lewis
(773)558-2471
lewis410@purdue.edu

— = Floor Level Patch Point
— = Below Platform Patch Point
— = XLR Cables

■ = PNX 121/ Sub
Dispersion: 90° H x 40° V
 ■ = JBL Control 5
 ■ = Practical Anchor Mini
 ■ = PNX 121/9T
Dispersion: 90° H x 40° V
 ■ = PNX61
Dispersion: 150° H x 60° V

In The Blood
By
Suzan-Lori Parks

Director Tasia Jones
 Scenic Designer Kate Cardinali
 Lighting Designer Baxter Chambers
 Costume Designer Allison Jones
 Drawn By DRS

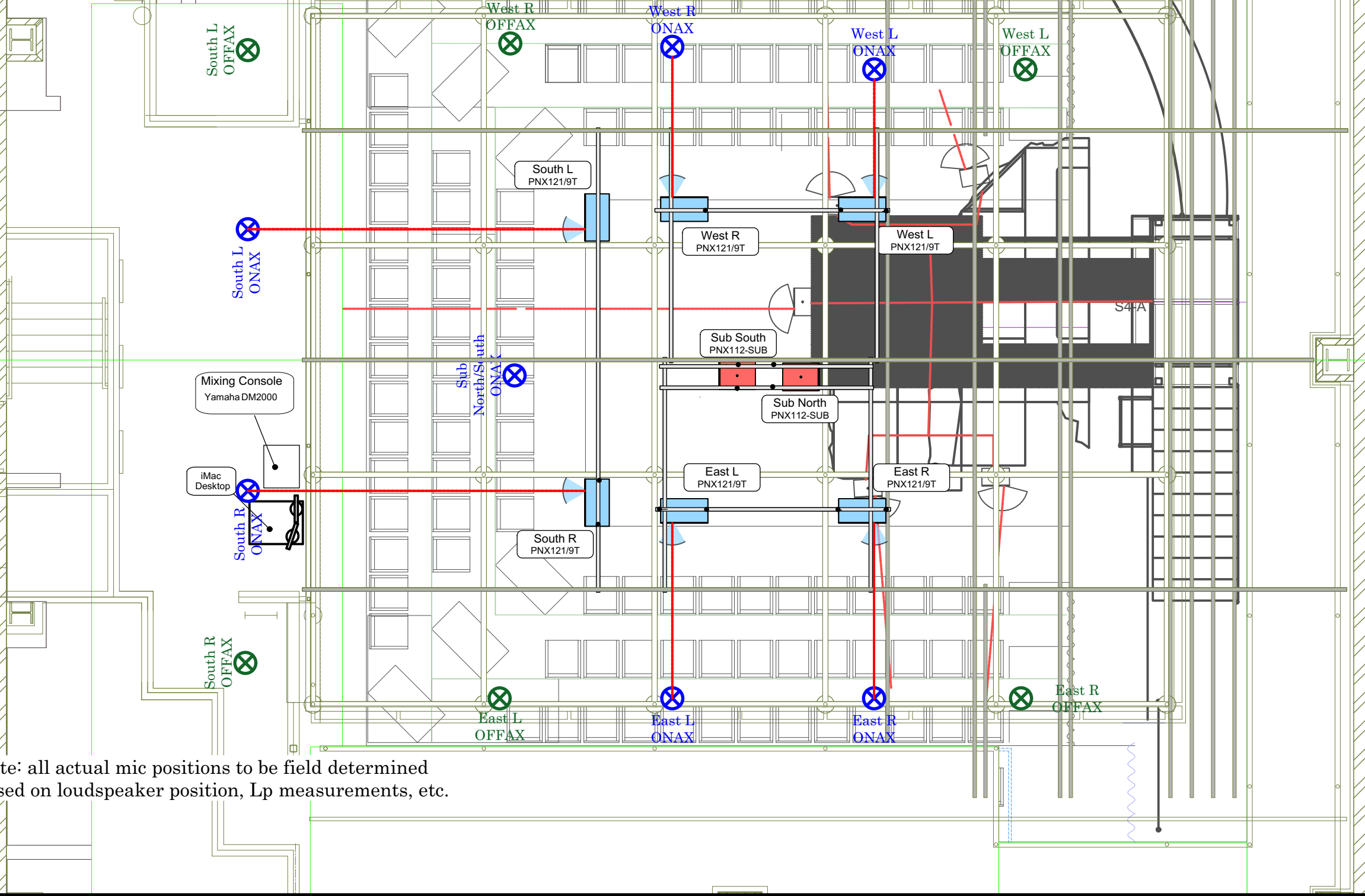
DISCLAIMER: The designer is responsible for the aural aspects of the production only, and all specifications provided relate solely to the appearance of the sound system and not to matters of electrical or structural soundness and/or safety. The implementation of this design must comply with the most stringent applicable federal and local safety and fire certificates. The designer is not qualified to determine the electrical or structural appropriateness of the design and will not assume responsibility for damages resulting through improper engineering and/or implementation in the handling of the elements of the sound design. The designer agrees to make prompt alterations to any specification found to be incompatible with proper safety precautions.

Plan - Grid & Gallery Lev

SDP

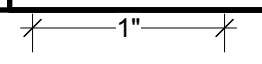
Scale 1/8" = 1'-0"
 Revision Delaney Shay-- 4/27/2020
 Plate # **02** of 3

- Calibration Notes**
- OFFAX points are approxiamte to be determined after listening in the free field to each speaker.
 - XOVER points to be used for Grid Speaker level set
 - Front Fill ONAX points to be used for Front fill level set



Note: all actual mic positions to be field determined based on loudspeaker position, Lp measurements, etc.

ORIGINALLY PRINTED AT 17" x 11"



Delaney Shay Sound Design

Assistant Adam Lewis
(773)558-2471
lewis410@purdue.edu

Sound Engineer Adam Lewis
(773)558-2471
lewis410@purdue.edu

— = Floor Level Patch Point
— = Below Platform Patch Point
— = XLR Cables

■ = PNX 121/ Sub
Dispersion: 90° H x 40° V

■ = JBL Control 5

■ = Practical Anchor Mini

■ = PNX 121/9T
Dispersion: 90° H x 40° V

■ = PNX61
Dispersion: 150° H x 60° V

In The Blood By Suzan-Lori Parks

Director Tasia Jones

Scenic Designer Kate Cardinali

Lighting Designer Baxter Chambers

Costume Designer Allison Jones

Drawn By DRS

DISCLAIMER: The designer is responsible for the aural aspects of the production only, and all specifications provided relate solely to the appearance of the sound system and not to matters of electrical or structural soundness and/or safety. The implementation of this design must comply with the most stringent applicable federal and local safety and fire certificates. The designer is not qualified to determine the electrical or structural appropriateness of the design and will not assume responsibility for damages resulting through improper engineering and/or implementation in the handling of the elements of the sound design. The designer agrees to make prompt alterations to any specification found to be incompatible with proper safety precautions.

Section - HL

SDP

Scale 1/8" = 1'-0"

Revision Delaney Shay—4/27/2020

Plate # 03 of 3

