

Jeff Sherwood
Sound Design

Associate

Sound Engineer Adam Lewis

Rev.	By	Notes
9/12/19	JRS	Updated Main and Library speaker placements.
9/30/19	JRS	Updated Piano and Main speakers

General Notes

Purdue University Theatre Presents

Miss Bennet Christmas at Pemberley
by Lauren Gunderson & Margot Melcon

Director Kristine Holtvedt

Scenic Designer Kate Cardinelli

Lighting Designer Baxter C. Chambers

Costume Designer Caroline Rein

Drawn By JRS

DISCLAIMER: The designer is responsible for the aural aspects of the production only, and all specifications provided relate solely to the appearance of the sound system and not to matters of electrical or structural soundness and/or safety. The implementation of this design must comply with the most stringent applicable federal and local safety and fire codes. The designer is not qualified to determine the electrical or structural appropriateness of the design and will not assume responsibility for damages resulting through improper engineering and/or implementation in the handling of the elements of the sound design. The designer agrees to make prompt alterations to any specification found to be incompatible with proper safety precautions.

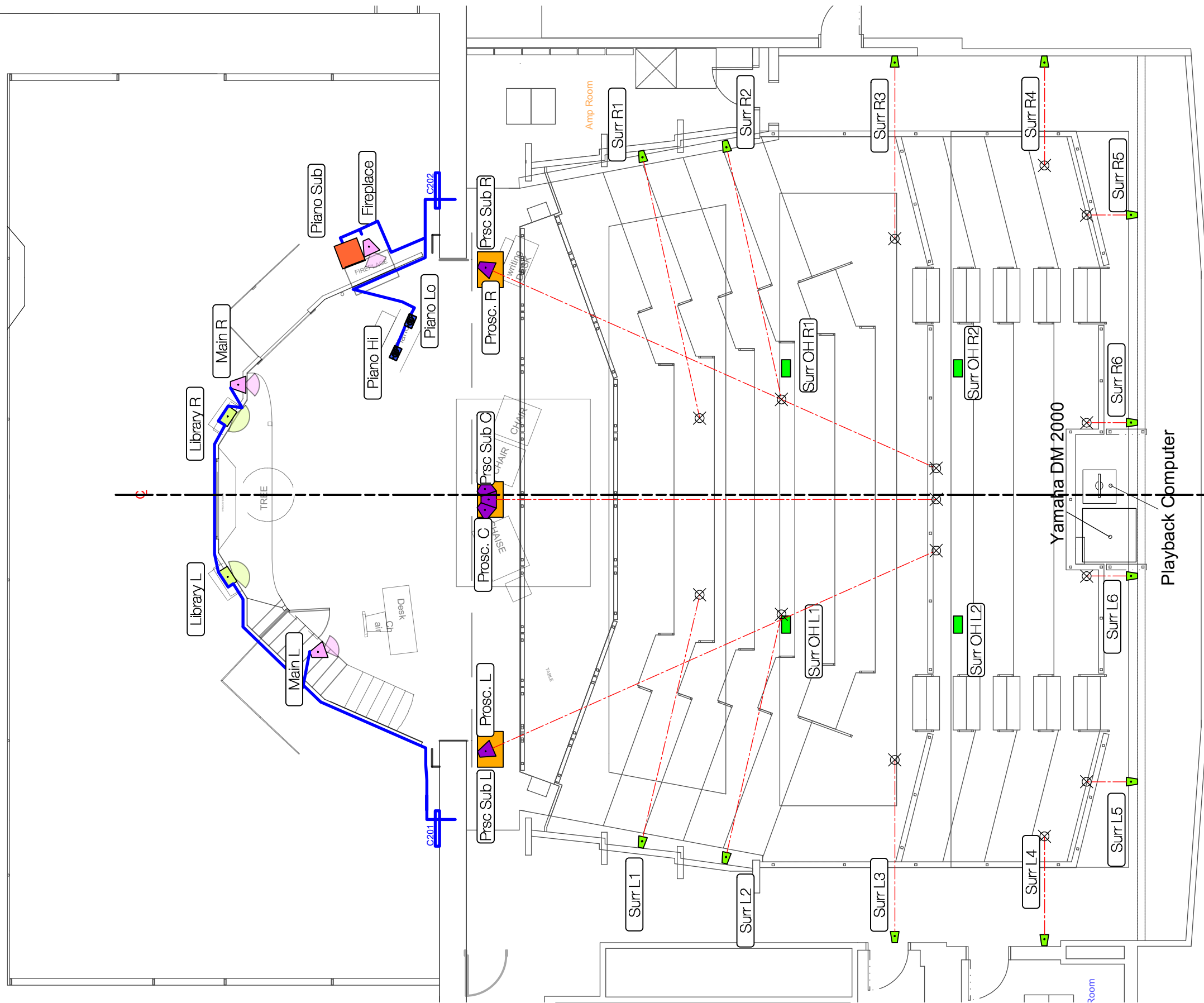
Sound Devices Plan

SPV

Scale 1/8" = 1'-0"

Revision JRS - 9/30/19

Plate # 01 of 2



KEY:

- RH PN 151
- RH PN 121
- RH PN 61
- RH PN 61
- RH TX 61
- RH TX 61
- d&b E6
- JBL PRX 518S
- RH PN 212
- Cable Pathway

Jeff Sherwood
Sound Design

Associate

Sound Engineer Adam Lewis

Rev.	By	Notes
9/10/19	JRS	Updated fireplace speaker.
9/12/19	JRS	Updated Main and Library speaker positions.
9/30/19	JRS	Updated Piano and Main speakers

General Notes

Purdue University Theatre Presents

Miss Bennet Christmas at Pemberley
by Lauren Gunderson & Margot Melcon

Director Kristine Holtvedt

Scenic Designer Kate Cardinelli

Lighting Designer Baxter C. Chambers

Costume Designer Caroline Rein

Drawn By JRS

DISCLAIMER: The designer is responsible for the aural aspects of the production only, and all specifications provided relate solely to the appearance of the sound system and not to matters of electrical or structural soundness and/or safety. The implementation of this design must comply with the most stringent applicable federal and local safety and fire codes. The designer is not qualified to determine the electrical or structural appropriateness of the design and will not assume responsibility for damages resulting through improper engineering and/or implementation in the handling of the elements of the sound design. The designer agrees to make prompt alterations to any specification found to be incompatible with proper safety precautions.

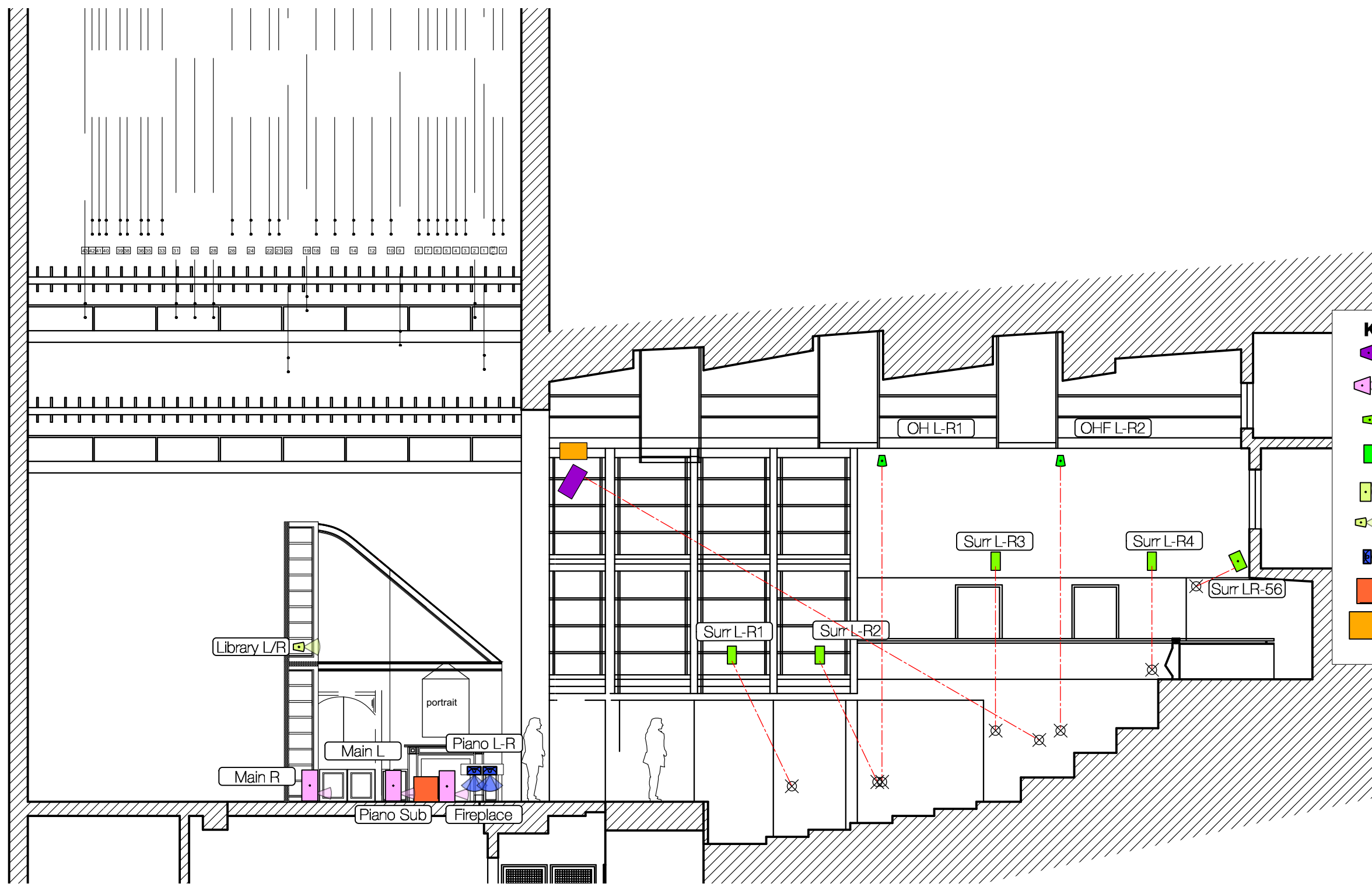
Sound Devices Sect.

SDP

Scale 1/8" = 1'-0"

Revision JRS - 9/30/19

Plate # **02** of 2



KEY:

- RH PNX 151
- RH PNX 121
- RH PNX 61
- RH PNX 61
- RH TX 61
- RH TX 61
- d&b E6
- JBL PRX 518S
- RH PN 212